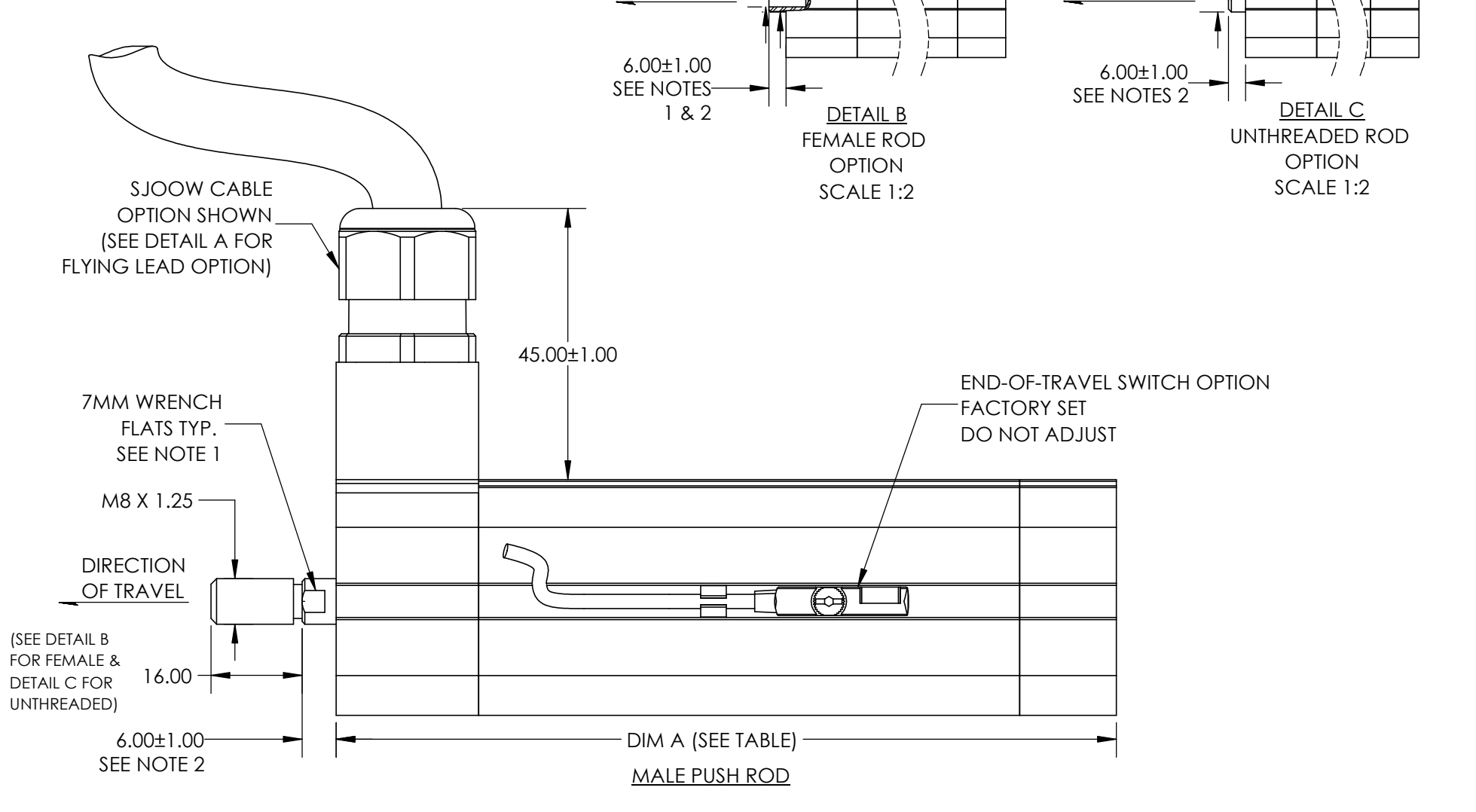
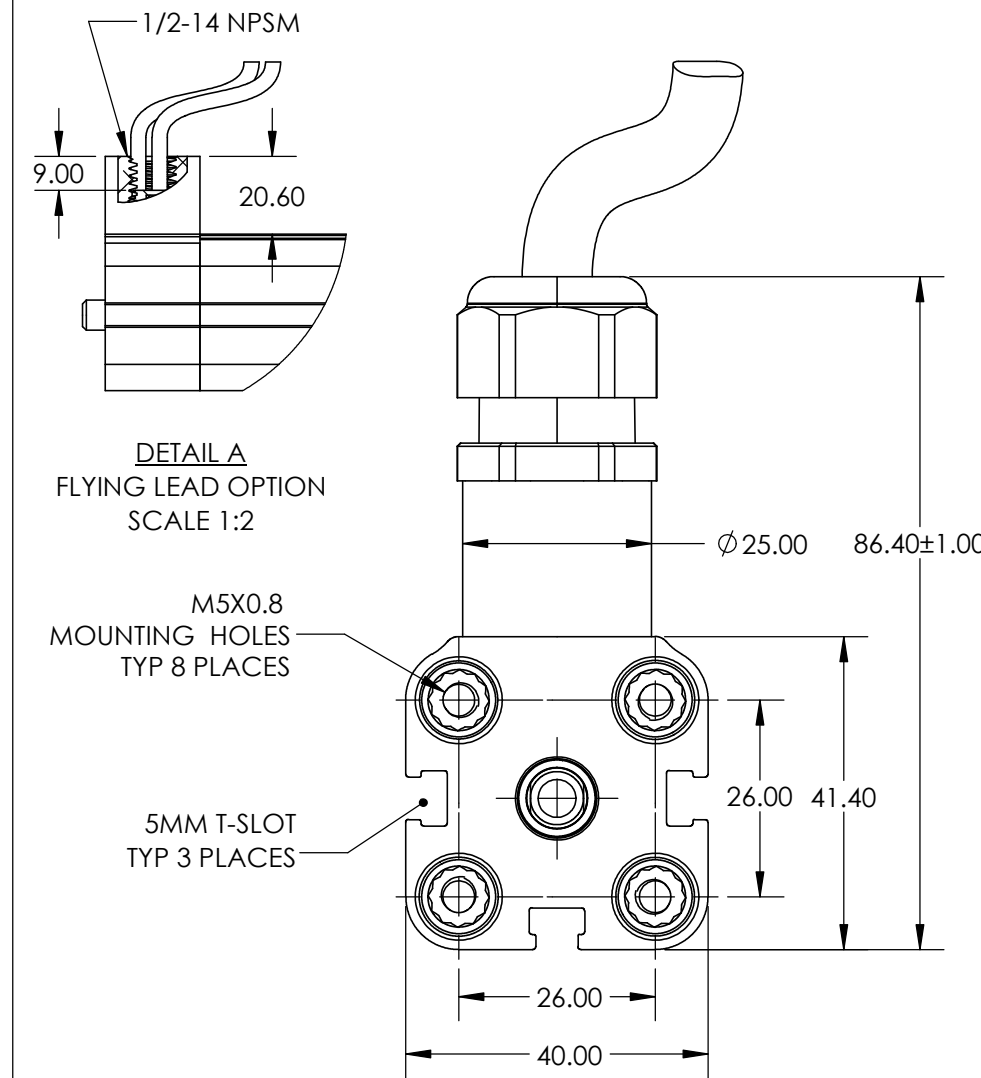


PARAMETER	PRODUCT CODE	UNITS	VALUE(S)				
NOMINAL STROKE	KLA05-#□-□-□□-□-□□-□	mm [in]	2	3	4	5	
DIM A	KLA05-#□-□-□□-□-□□-□	mm [in]	137[5.39]	177[6.97]	217[8.54]	257[10.12]	
MOVING MASS	PUSH	KLA05-□□-□-PS□-□-□□-□	g [oz]	76 [2.7]	92 [3.3]	108 [3.8]	125 [4.4]
WEIGHT	AIR COOLED	KLA05-□□-□-□□-□-□□-□	kg [lb]	0.51 [1.1]	0.62 [1.4]	0.76 [1.7]	0.86 [1.9]
	OIL COOLED	KLA05-□□-□-□□-□-□□-□	kg [lb]	0.55 [1.2]	0.67 [1.5]	0.82 [1.8]	0.94 [2.1]
OPERATING TEMPERATURE RANGE	AIR COOLED	KLA05-□□-□-□□-□-□□-□	°C [°F]	-40 TO 60 [-40 TO 140]			
	OIL COOLED	KLA05-□□-□-□□-□-□□-□	°C [°F]	-20 TO 60 [-4 TO 140]			
STORAGE TEMPERATURE RANGE	KLA05-□□-□-□□-□-□□-□	°C [°F]	-40 TO 80 [-40 TO 176]				
INGRESS PROTECTION	KLA05-□□-□-□□-□-□□-□		IP67				

LEAD WIRE TABLE			
NOM. VOLTAGE	PRODUCT CODE	CABLE OPTION	FLYING LEADS OPTION
D1 - 12VDC	KLA05-□□-□□-□□-□□-□□-□	2 CONDUCTOR 12 AWG SJOOW 300 VOLT CABLE	2X 12 AWG
D2 - 24VDC	KLA05-□□-□□-□□-□□-□□-□	2 CONDUCTOR 12 AWG SJOOW 300 VOLT CABLE	2X 12 AWG
A1 - 120 VAC	KLA05-□□-□□-□□-□□-□□-□	3 CONDUCTOR 14 AWG SJOOW 300 VOLT CABLE	3X 14 AWG



NOTES:

- ROD IS NON-ROTATING. USE WRENCH ON FLATS TO COUNTERACT TORQUE APPLIED DURING INSTALLATION.
- MEASURED @ 20°C. SUBJECT TO ACTUATOR TEMPERATURE EFFECT AND HOME POSITION DRIFT.

MATERIALS:

BODY - ANODIZED ALUMINUM
ROD - STAINLESS STEEL

REVISIONS			
REV.	DESCRIPTION	DATE	APPROVED
A	INITIAL RELEASE	28/02/2018	DP
B	REVISED END-OF-TRAVEL DETAIL	28/03/2019	DL

KINITICS AUTOMATION

THIS DRAWING IS THE PROPERTY OF KINITICS AUTOMATION LIMITED (KAL) AND MUST BE RETURNED TO KAL ON REQUEST. ITS CONTENTS ARE SECRET AND CONFIDENTIAL. ANY INFORMATION OBTAINED BY INSPECTION OF THIS DRAWING SHALL NOT BE USED FOR ANY OTHER THAN THE SPECIFIC PURPOSE FOR WHICH ITS INSPECTION IS AUTHORIZED.

PROJ		SCALE	1:1	DAY	MO.	YEAR
		DESIGN	DL			26/02/2017
		DES.CHK.	DP			02/03/2018
		DRAWN	DL			26/02/2017
		DWG.CHK.	DP			02/03/2018
		APPROVED	DP			02/03/2018

UNITS MM
TOLERANCE ± 0.25 MM
SIZE B

PUSH ROD OUTLINE

KINITICS 05 FRAME SIZE

DWG NO. **KLA160101018**

CAD KAL160101017.SLDDRW

SHEET 1 OF 1

REV **B**